

 **PRECISE**

Customized Access to Global Cancer Data

With **35+ tumors (solid and hematopoietic)** and **80+ countries**, one can query any combination of factors customized for your business area. Each country specific data set has been rigorously analyzed to create an accurate view of the epidemiology of specific cancer types. The database is fully documented with the sources and assumptions used to support the global numbers.

A web-based tool that contains all your cancer epidemiology numbers.

Proven
Reliable
Epidemiology for
Cancer
Information
Segmentation and
Extrapolation

COMPLETELY CUSTOMIZABLE

Users can have their own unique database which is customized by tumor set, and within each tumor by patient segments, data sources, countries and company-specific regions (reporting business units)

The user of The PRECISE Database has access to 7 tabs of information

Detailed Data View: Allows for comparison of the epidemiology results for a set of aggregated patient segments

Summarized Data View: Allows for comparison of the various patient segments across selected aggregated epis

Flowchart: For cancers with complex patient segments, the relationships of the segments are shown in an interactive visual tool

General Information: Documents basic information about the cancer

Sources of Data: Reference list for various aspects of epidemiology by country

Epi Info: Reports the key numerical assumptions that define the data

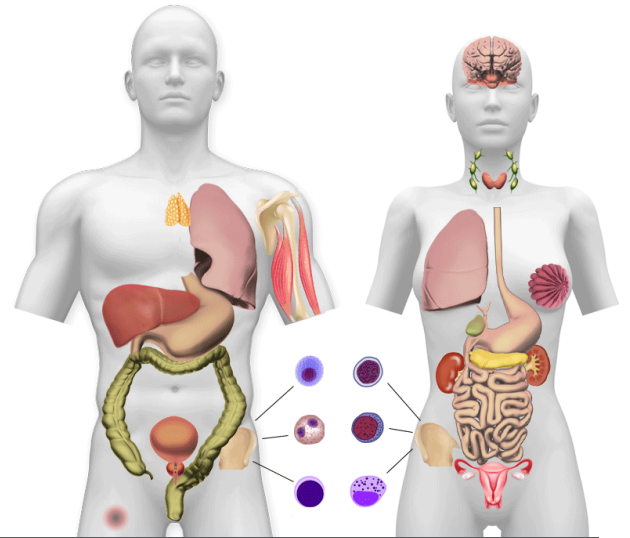
Saved Indications: Allows the user to save specific groups of patient segments that are tied to product indications

USER FRIENDLY AND INTERACTIVE

PRECISE displays a visualization map of cancers by anatomical sites.

Each tumor can be customized so that key considerations and patient segments are included for the tumor:

- Relevant stages/grades
- Tumor specific treatments
- Important tumor markers
- Advanced stage lines of therapy



GLOBAL COVERAGE

Registry data for 80+ countries used to create country specific cancer epidemiology

Algeria	Brazil	Dominican Republic	Honduras	Kazakhstan	Morocco	Poland	South Africa	United Arab Emirates
Argentina	Bulgaria	Ecuador	Hong Kong	Kuwait	Netherlands	Portugal	South Korea	United Kingdom
Armenia	Canada	Egypt	Hungary	Latvia	New Zealand	Qatar	Spain	United States
Australia	Chile	El Salvador	India	Lebanon	Nicaragua	Romania	Sweden	Uruguay
Austria	China	Estonia	Indonesia	Libya	Norway	Russia	Switzerland	Uzbekistan
Bahrain	Colombia	Finland	Iran	Lithuania	Oman	Saudi Arabia	Taiwan	Venezuela
Belarus	Costa Rica	France	Ireland	Luxemburg	Pakistan	Serbia	Thailand	
Belgium	Croatia	Germany	Israel	Malaysia	Panama	Singapore	Tunisia	
Bolivia	Cyprus	Greece	Italy	Malta	Peru	Slovakia	Turkey	
Bosnia	Czech Republic	Guatemala	Japan	Mauritania	Philippines	Slovenia	Ukraine	
	Denmark	Herzegovina	Jordan	Mexico				

FULLY DOCUMENTED

Sources and assumptions used to create the data

USER-DEFINED INDICATIONS

Users can create their own specific indications aligning with clinical trials or product label to visualize the size of the market by each indication

CUSTOMIZED TREATMENT DATA

Users can customize treatment data depending on the source of information. Easily integrate user-specific data purchased on the secondary market; or Tessellon can conduct primary market research to help customize the treatment data

FLEXIBLE ACCESS

Pay for complete or partial access based on your needs. Unlimited yearly database access — maintenance fees required with no forced renewal, upgrade when you are ready!