



PREDICT

Customized Access to Global Epidemiology Data



With experience in 50+ diseases in 10+ therapeutic areas throughout 80+ countries, one can query any combination of factors customized for your business area. Each country specific data set has been rigorously analyzed to create an accurate view of the epidemiology of specific diseases. The database is fully documented with the sources and assumptions used to support the global numbers.

A web-based tool that contains all your custom epidemiology numbers.

Proven
Reliable
Epidemiology for
Decisions
Informing
Communication and
Tactics

COMPLETELY CUSTOMIZABLE

Users can have their own unique database which is customized by tumor set, and within each tumor by patient segments, data sources, countries and company-specific regions (reporting business units)

The user of The PRECISE Database has access to 7 tabs of information

Data View (By Country): Allows for comparison of the epidemiology results between countries

Data View: Allows for reporting of all patient segments for a set of countries

Flowchart: For cancers with complex patients segments the relationships of the segments are shown in a visual tool

General Information: Documents basic information about the cancer

Sources of Data: Reference list for various aspects of epidemiology by country

Epi Info: Reports the key numerical assumptions that define the data

Saved Indications: Allows the user to save specific groups of patient segments that are tied to product indications

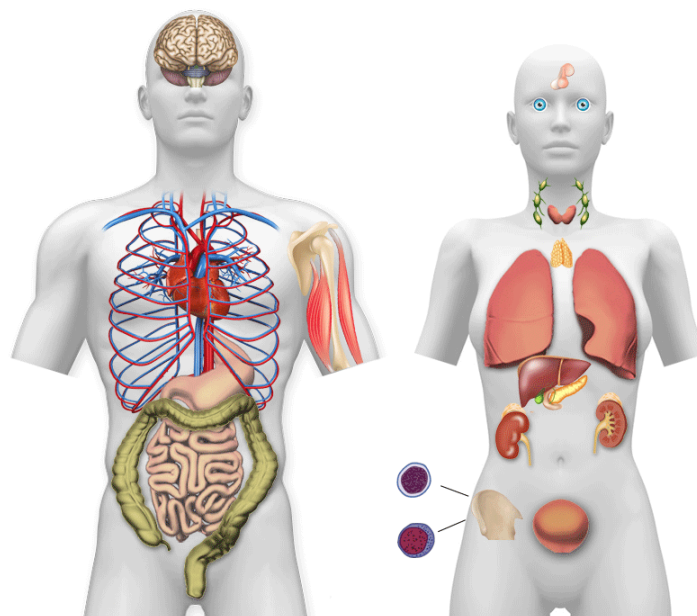


USER FRIENDLY AND INTERACTIVE

PREDICT displays a visualization map of disease by anatomical sites.

Each disease can be customized so that key considerations and patient segments are included in the epidemiology:

- Total incidence and/or prevalence
- Relevant stages, grades, severity of the disease
- Important disease comorbidities
- Disease specific treatment data



GLOBAL COVERAGE

Can be supported by data for 80+ countries used to create country specific epidemiology

Algeria	Brazil	Dominican Republic	Honduras	Kazakhstan	Morocco	Poland	South Africa	United Arab Emirates
Argentina	Bulgaria	Ecuador	Hong Kong	Kuwait	Netherlands	Portugal	South Korea	United Kingdom
Armenia	Canada	Egypt	Hungary	Latvia	New Zealand	Qatar	Spain	United States
Australia	Chile	El Salvador	India	Lebanon	Nicaragua	Romania	Sweden	Uruguay
Austria	China	Estonia	Indonesia	Libya	Norway	Russian	Switzerland	Uzbekistan
Bahrain	Colombia	Finland	Iran	Lithuania	Oman	Saudi Arabia	Taiwan	Venezuela
Belarus	Costa Rica	France	Ireland	Luxemburg	Pakistan	Serbia	Thailand	
Belgium	Croatia	Germany	Israel	Malaysia	Panama	Singapore	Tunisia	
Bolivia	Cyprus	Greece	Italy	Malta	Peru	Slovakia	Turkey	
Bosnia	Czech Republic	Guatemala	Japan	Mauritania	Philippines	Slovenia	Ukraine	
	Denmark	Herzegovina	Jordan	Mexico				

FULLY DOCUMENTED

Sources and assumptions used to create the data

USER-DEFINED INDICATIONS

Users can create their own specific indications aligning with clinical trials or product label to visualize the size of the market by each indication

CUSTOMIZED TREATMENT DATA

Users can customize treatment data depending on the source of information. Easily integrate user-specific data purchased on the secondary market; or Tessellon can conduct primary market research to help customize the treatment data

FLEXIBLE ACCESS

Pay for complete or partial access based on your needs. Unlimited Yearly Database Access - Maintenance fees required with no forced renewal, upgrade when you are ready!